

7-2014

Family Meanings, Contexts and Hopes Within a Clinical Trial

Laura Greis Hess

MIND Institute, University of California, Davis, laura.hess@dominican.edu

Cynthia Carter Ching

MIND Institute, University of California, Davis

Randi Hagerman

MIND Institute, University of California, Davis

Survey: Let us know how this paper benefits you.

Recommended Citation

Hess, Laura Greis; Ching, Cynthia Carter; and Hagerman, Randi, "Family Meanings, Contexts and Hopes Within a Clinical Trial" (2014). *Collected Faculty and Staff Scholarship*. 104.

<https://scholar.dominican.edu/all-faculty/104>

This Conference Proceeding is brought to you for free and open access by the Faculty and Staff Scholarship at Dominican Scholar. It has been accepted for inclusion in Collected Faculty and Staff Scholarship by an authorized administrator of Dominican Scholar. For more information, please contact michael.pujals@dominican.edu.

Laura Greiss Hess, PhD, OTR/L ^(1,2), Cynthia Carter Ching, PhD ⁽²⁾ and Randi Hagerman, MD ⁽¹⁾

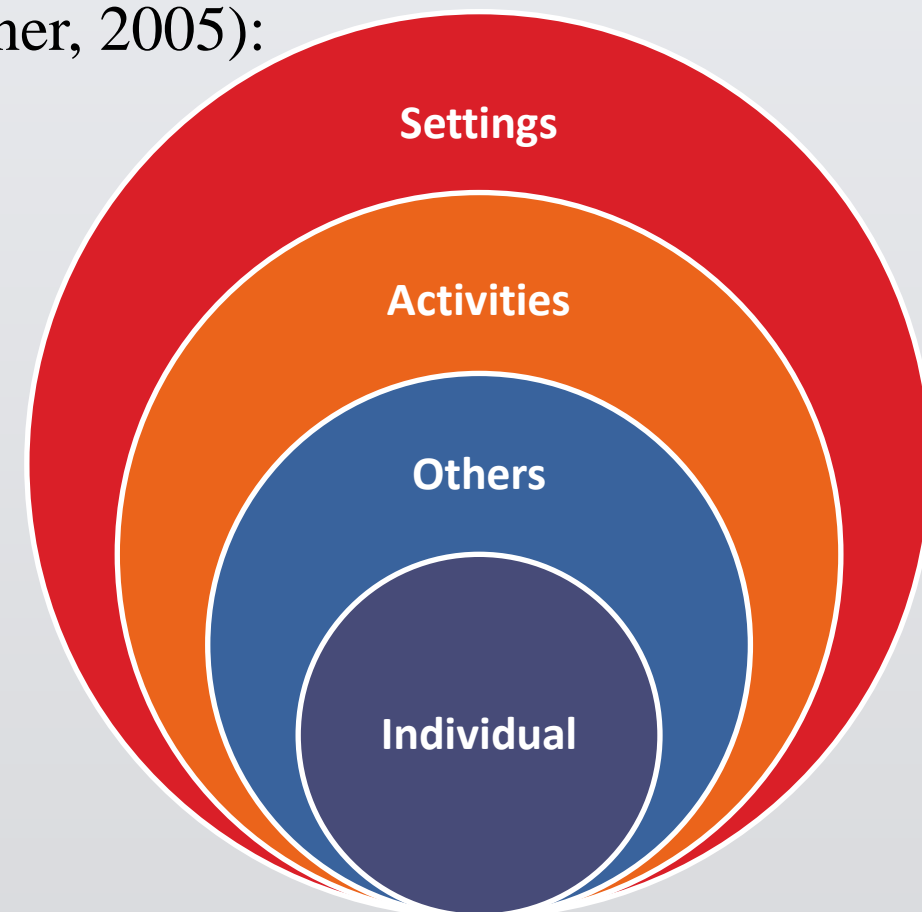
(1) Pediatrics, MIND Institute, UC Davis, Sacramento, CA (2) School of Education, UC Davis, Davis, CA

INTRODUCTION

These qualitative analyses are a component of the clinical trial: *“Effects of Sertraline Treatment for Young Children with FXS: Examination of Developmental Outcomes and Family Contexts.”*

We argue that inclusion of a sociocultural perspective within the context of a clinical trial affords consideration of:

- A dynamic view of development – simultaneous consideration of biological and sociocultural factors (Vygotsky, 1978).
- Application of a bioecological framework and consideration of ever changing nested settings and contexts over time (Bronfenbrenner, 2005):



RESEARCH QUESTIONS

Through interview methods and qualitative analysis we empirically explored the following questions:

- (1) What are the complexities of daily life, experiences and family meaning associated with various phenotypic manifestations of FXS? (e.g. language / communication, behavior, sensory processing, and anxiety)
- (2) What are family hopes and meanings for participation in this clinical trial?

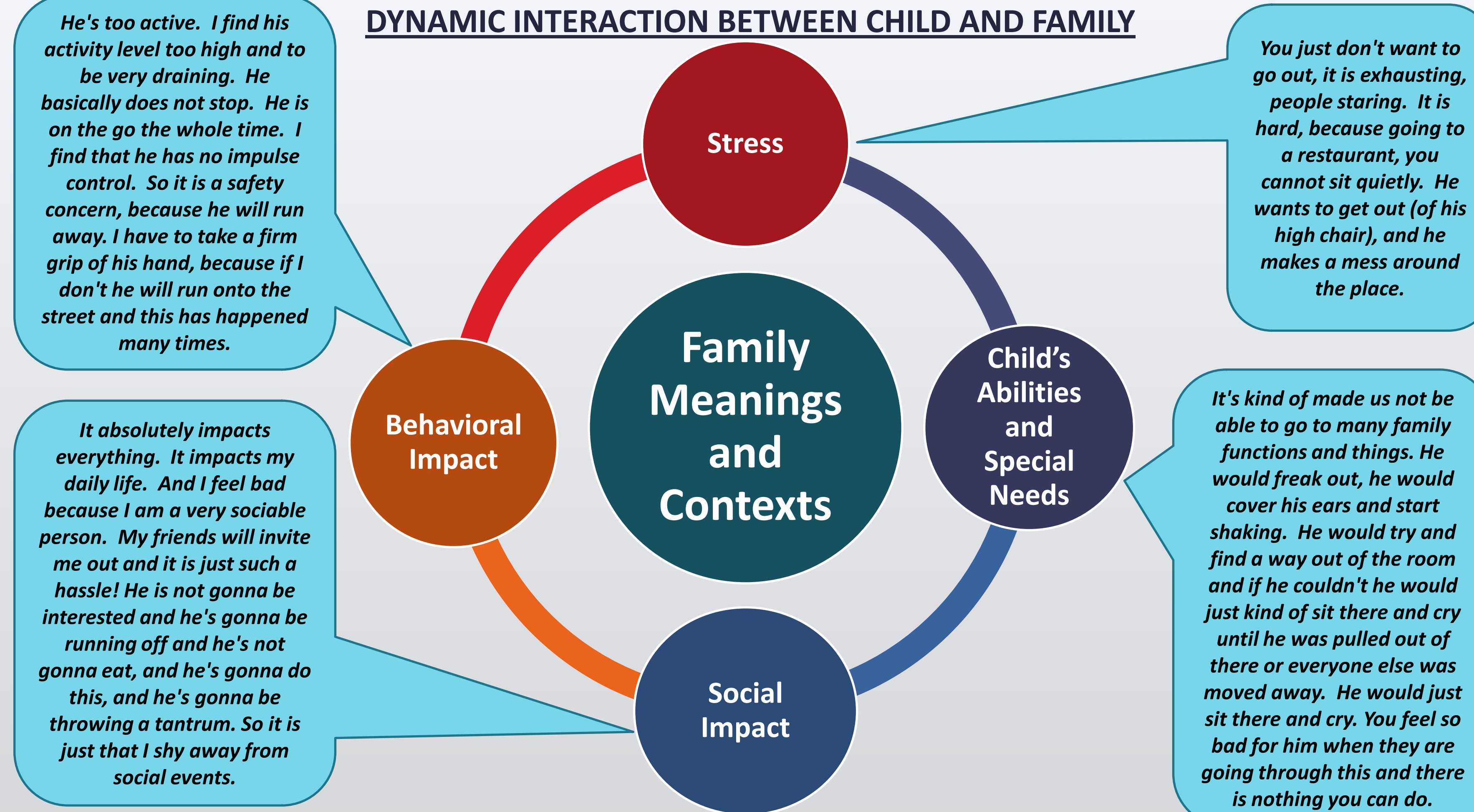
SAMPLE and METHODOLOGY

- 12 randomly selected interviews (6 baseline and 6 post)
 - 4 placebo and 2 sertraline treatment
 - Transcription and coding done blind.
- We used a directed, narrative, conversational interview at baseline and post testing.
- Families were asked to share their stories and experiences in their own words as a first person account, rather than responding to a set of predetermined response choices.
- Interviews were audio recorded, transcribed verbatim and coded using the Constant Comparison Method. Code cloud below – largest codes indicate highest frequency.

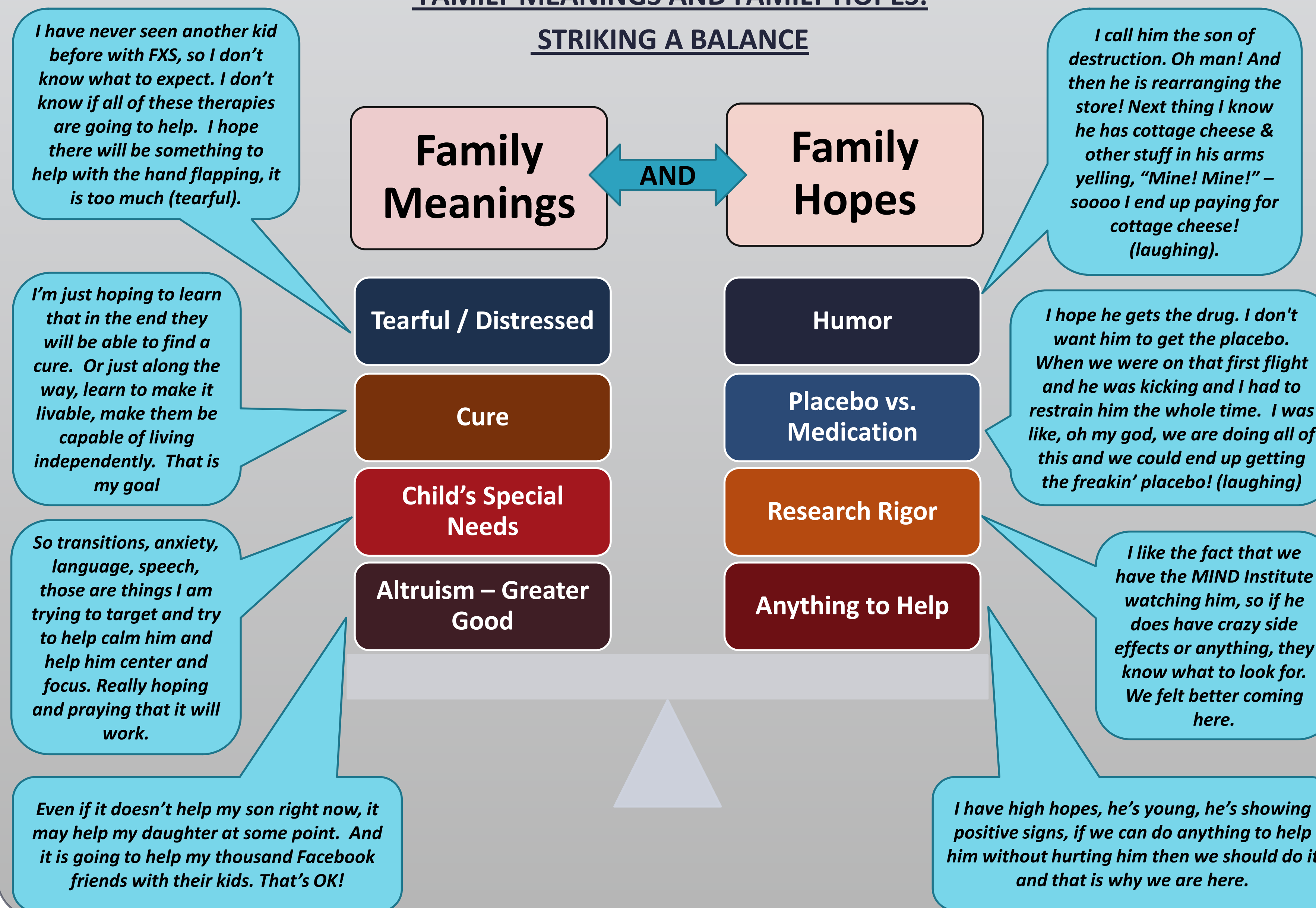


RESULTS

DYNAMIC INTERACTION BETWEEN CHILD AND FAMILY



FAMILY MEANINGS AND FAMILY HOPES: STRIKING A BALANCE



CONCLUSIONS

- Overall family functioning strongly enmeshed with child's functioning including family participation in social events and in the community
 - ✓ Nested contexts
- Family hopes for medication often high
- Family perceptions of what constitutes improvement varies
 - ✓ Any improvement is improvement
 - ✓ Searching for something more pronounced (e.g. going from non-verbal to verbal in a 6 month trial)
- Inclusion of qualitative narrative interviews within the context of a clinical trial provides:
 - ✓ Insights into complexities of family life in context
 - ✓ An outcome measure that can be applied to compare placebo vs. medication groups beyond the scope of developmental measures or questionnaires
 - ✓ An outcome measure that can be examined quantitatively in future analyses
- This study represents a mixed methods (both quantitative and qualitative) model for a collaborative and interdisciplinary clinical trial research
 - ✓ Our interdisciplinary team from the fields of: medicine, occupational therapy, education, and speech pathology
 - ✓ This model is a mirror to what best practices are for intervention for children with FXS

SELECTED REFERENCES

•Bronfenbrenner, U., & Ceci, S.J. (1994). Nature-nurture reconceptualized in developmental perspective: A bioecological model. *Psychological Review*, 101(4), 568-586.

•Bronfenbrenner, U. (2005). *Making Human Beings Human: Biological Perspectives on Human Development*. Thousand Oaks, CA: Sage Publications, Inc.

•Chaiklin, S. (2003). The zone of proximal development in Vygotsky's analysis of learning and instruction. In Kozulin, Gindis, Ageyev & Miller (eds.), *Vygotsky's educational theory in cultural context*. Cambridge University Press (pp. 39-64).

•Cohn, E., Miller, L.J., & Tickle-Degnen, L. (2000). Parental hopes for therapy outcomes: Children with sensory modulation disorders. *American Journal of Occupational Therapy*, 54, 36-43.

•Merriam, S.B. (2009). *Qualitative Research: A Guide to Design and Implementation*. Jossey-Bass, San Francisco, CA.

•Rogoff, B. (2003). *The cultural nature of human development*. Oxford University Press.

•Seidman, I. (2006, Third Ed.). *Interviewing as Qualitative Research: A Guide for Researchers in Education and the Social Sciences*. Teachers College Press, New York, NY.

•Vygotsky, (1978). *Mind in society*. Cambridge, MA: Harvard University Press.

•Weiss, R. (1995). *Learning from Strangers: The Art and Method of Qualitative Interviewing*. The Free Press, New York, NY.

•Wertsch, J. (1985). *Vygotsky and the social formation of mind*. Cambridge, MA: Harvard University Press.

ACKNOWLEDGEMENTS and CONTACT

- This study was funded by Health Resources and Services Administration (HRSA, #R40MC22641).
- Our sincerest thanks to the FXS families who participated in this study and to the FXS community for supporting this research.
- MIND Institute Sertraline Team: Lauren Bishop, Salpi Siyahian, Tasleem Chechi, Jonathan Polussa, Susan Harris, Andrea Schneider, Kerrie Lemons Chitwood, Kylee Cook, Beth Goodlin-Jones, David Hessl, Pam Gallego, Louise Gane, Michele Ono and Julie Morcillo
- Contact:
 - Laura Greiss Hess, PhD, OTR/L (greissshess@comcast.net)